



Community Circular

A Monthly Update for Community Circle Members • Published by Community National Bank

August 2019

Dear Members,

Where does the time go, summer is flying by! Just the other day we were waiting for spring and now the Fairs are right around the corner.

On the other hand, maybe having so much fun with all of you in Community Circle just seems to make the time go faster. Thank you for all your wonderful participation!



AUGUST 1st, 2019 Castle in the Clouds – Moultonborough, NH

We will plan to leave the Community National Bank parking lot in Derby at 7:00 a.m. and expect to arrive back in Derby at approximately 6:30 p.m.



Gift Shop ▲

Shannon Lake ▶



MAMA MIA!

**AUGUST 9th – 11th and
AUGUST 16th – 18th
Borderline Players
Present “Mamma Mia!”**



We are sponsoring “Mamma Mia!” August 9th through August 11th and August 16th through August 18th at the Haskell Opera House (93 Caswell Avenue, Derby Line, VT or 1 Church Street, Stanstead, Quebec). On a Greek island, Sophie dreams of a perfect wedding – one which includes her father giving her away. The problem? Sophie doesn’t know who he is! Her mother Donna, the former lead singer of the 1970s pop group Donna and the Dynamos, refuses to talk about the past, so Sophie decides to take matters into her own hands. Sneaking a peak in her mother’s old diaries, she discovers three possible fathers: Sam, Bill and Harry. She secretly invites her three possible fathers to the wedding, convinced that she’ll know her father when she sees him. But when all three turn up, it may not be as clear as she thought! Told through the legendary music of ABBA, *Mamma Mia!* has become a worldwide sensation that has audiences everywhere dancing.

We are pleased to offer reduced priced tickets to Community Circle members and you must be a member to receive this special price. **PLEASE NOTE: you may get ONE ticket per member for each performance. If you do not have a membership card, please stop in at any one of our branches/offices and we will gladly give you one.**

- Reserve your seat by sending an email to Borderlineplayers@outlook.com, or via online at borderlineplayers.org. If you do not have Internet access, you may also show up at the door. It is recommended to arrive early.
- Present your membership card when you pick up your ticket for \$7.00 at the door on the day/night of the performance.

Show Times for “Mamma Mia”

- Fridays and Saturdays at 7:30 p.m.
- Sundays at 2:00 p.m.



Community
National Bank



Vermont’s Community Bank
Equal Housing Lender  Member FDIC

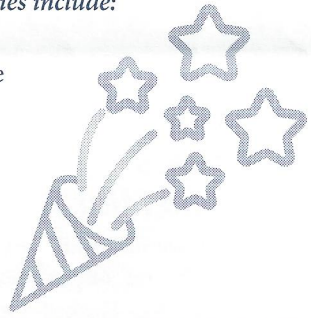
communitynationalbank.com
802-334-7915



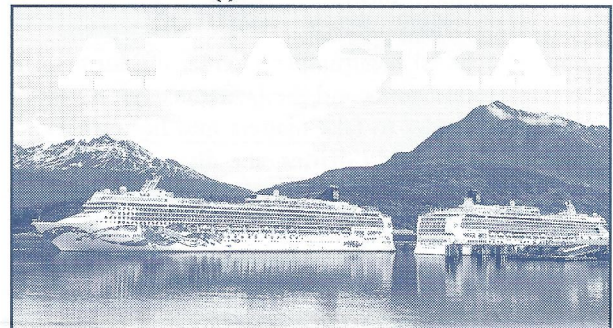
AUGUST 10th, 2019
Derby Line Community Day and Village-Wide Yard Sale

Family events all day at Baxter Park and fireworks at dusk! *Just a few of the festivities include:*

- Wildlife Encounters
- Kingdom Bounce and Slide
- Bingo
- Face Painting
- Arts and Crafts
- Local Vendors
- Food and Beverages
- And much, much more!



Derby Line Community Day has a Facebook page for more information. *Fireworks compliments of Community National Bank.*



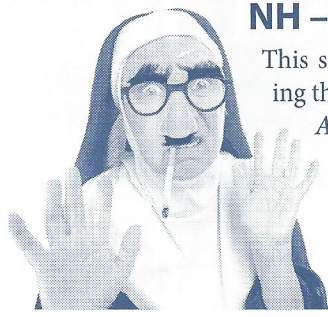
AUGUST 22nd, 2019 –
1:00 p.m. to 2:30 p.m.
Andrew Bessette from Collette Vacations Joins Us to Present
“ALASKA” a Land/Cruise Tour for 2020

The travel presentation will be held at the East-side Restaurant in Newport from 1:00 p.m. to 2:30 p.m. Please give us a call at 334-7915 to reserve your spot for this presentation.

Final pricing and detailed itineraries will be available at the presentation. Please note: passports are required for this trip.



AUGUST 24th, 2019
The Weathervane Theatre in Whitefield, NH – “SISTER ACT”



This summer the Weathervane Theatre is featuring the very popular musical Broadway hit “*Sister Act*”. Prior to the 2:00 matinee, enjoy a luncheon at The Inn at Whitefield. You may select from the following entrées:

- Lemon Cilantro Salmon
- Chicken Marsala
- Penne Alfredo

Your entrées will also be served with potato and vegetables along with bread and butter, coffee, iced tea and dessert.

After lunch, “*Sister Act*” will be performing at the Weathervane. *Sister Act* is the feel-good musical comedy smash based on the hit 1992 film that has audiences jumping to their feet! This uplifting musical was nominated for five Tony Awards, including best musical. When disco diva, Deloris Van Cartier, witnesses a murder, she is put in protective custody in the one place the cops are sure she won't be found: a convent! Disguised as a nun, she finds herself at odds with both the rigid lifestyle and uptight Mother Superior. Using her unique disco moves and singing talent to inspire the choir, Deloris breathes new life into the church and community but, in doing so, blows her cover. Soon, the gang is giving chase, only to find them up against Deloris and the power of her newly found sisterhood. Filled with powerful gospel music, outrageous dancing and a truly moving story, *Sister Act* will leave audiences breathless. A sparkling tribute to the universal power of friendship, *Sister Act* is reason to REJOICE!

The price for this trip is \$99.00 which includes transportation, lunch and the afternoon performance. **We will leave the Community National Bank upper parking lot in Derby at 10:00 a.m. and expect to arrive back in Derby approximately 6:30 p.m.**



SEPTEMBER 11th-16th, 2019
Nashville Getaway – SOLD OUT

Since our flights are leaving earlier than originally planned on Thursday, September 12th, we will be departing at 1:00 p.m. on Wednesday, September 11th and staying at the SpringHill Suites by Marriott in Manchester, NH. We sincerely hope this will not cause you any inconvenience.

We will give you a call when your documents arrive to set up a time to get together.





**OCTOBER 2nd, 2019
Conway Scenic Railroad**

All Aboard!! Come and experience a first-class train ride as well as a three-course luncheon on the Conway Scenic Railroad's elegant dining car, the *Hattie Evans*, through Crawford Notch!

On this excursion, you'll travel on what was once the Maine Central Railroad's famed Mountain Division line, on tracks that were laid in the 1870s. Enjoy some of the most dramatic natural scenery in the East as you travel through spectacular Crawford Notch – past sheer bluffs, steep ravines, cascading brooks and streams, panoramic mountain vistas, across Frankenstein Trestle and Willey Brook Bridge – enroute to Crawford and Fabyan stations. As you travel through this rugged terrain, you can begin to appreciate what a remarkable engineering achievement

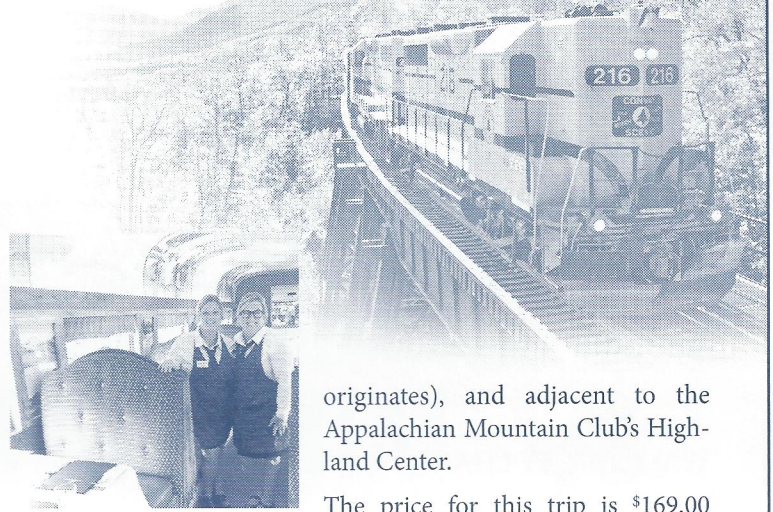
constructing this railroad was over 140 years ago. Live commentary onboard includes history and folklore of the railroad and area, as well as points of interest. Included in this excursion is a layover at Crawford Station, across from Saco Lake (a small pond from which the mighty Saco River



Crawford Station

PHOTO CREDIT: DEBBE HILL

Frankenstein Trestle



originates), and adjacent to the Appalachian Mountain Club's Highland Center.

The elegant Hattie Evans

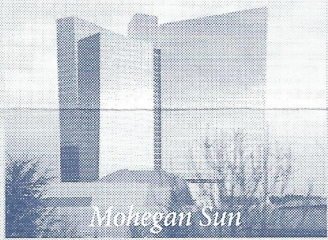
The price for this trip is \$169.00 which includes First Class train ride, luncheon, tax and service charge. There is a cash-only snack bar offered on the train. Beer, wine and mixed cocktails along with all other beverages will be available for purchase. *Payment is due September 6th. We will leave the Community National Bank upper parking lot in Derby at 7:00 a.m. and expect to arrive back in Derby approximately 8:00 p.m.*



**OCTOBER 23rd to OCTOBER 25th, 2019
Mohegan Sun and Foxwoods Casino**

Come join us for our annual trip to Mohegan Sun and Foxwoods Casino and try your luck! We will stop in White River at McDonald's for a coffee break along the way. Our next stop is the Mohegan Sun Casino for lunch. Later in the day, we travel down to Foxwoods Casino. There, we will stay at the beautiful Great Cedar Hotel and Tower. Along with being conveniently located, the Great Cedar offers a variety of restaurants,

an indoor pool, a fitness center, a spa and a night club with entertainment. On Thursday evening, a group of us try our luck at Bingo and you are welcome to join us! For those looking for a shopping experience, Foxwoods has also added the Tanger Outlets which is the nation's first Tanger Outlets collection of premium brands under one roof! Their website is www.foxwoods.com/tanger for more information.



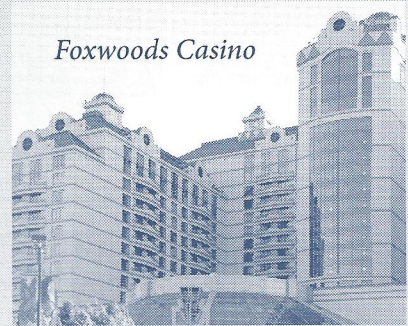
Mohegan Sun

While at Foxwoods, a shuttle is available for the Mashantucket Pequot Museum and Research Center, www.pequotmuseum.org. The Pequot Museum will take you on an immersive, eye-opening journey through time to explore history and today's vibrant American Indian cultures. Their award-winning, interactive, multi-media environment stimulates the senses, captures the imagination and stirs the spirit.

The price for this trip is \$325.00 per person double occupancy, \$304.00 per person triple occupancy, and \$405.00 single. *A deposit of \$50.00 per person is due with registration and final payment is due September 20th. We will leave the Community National Bank parking lot in Derby at 7:00 a.m. and expect to arrive back in Derby on the 25th at approximately 8:00 p.m.* Since these reservations are made several months in advance, the bonus packages at both casinos may be substituted for another.



Foxwoods Casino

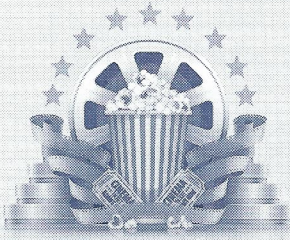


This trip includes:

- Transportation – Premier Motor Coach
- Mohegan Sun – \$15.00 meal voucher; and \$15.00 free bet per person.
- Two nights lodging at “The Great Cedar Hotel & Tower”
- Foxwoods – \$20.00 slot play; two \$10.00 food coupons per person or full buffet; \$5.00 food coupon per person or full breakfast buffet; 20% discount coupon for the shops at Foxwoods with a minimum \$25.00 purchase; and luggage handling.



★★★ *Join us at the Movies!* ★★★



August 13th, 2019
STAR THEATRE
 Eastern Avenue, St. Johnsbury

For movie listings:
 Website – stjaytheatre.com
 or phone 802-748-9511.

August 28th, 2019
CITY CINEMA
 Waterfront Plaza, Newport

For movie listings:
 Website – citycinemanewport.com
 or phone 802-334-2610.

We serve complimentary coffee and pastries from 8:30 a.m. to 9:30 a.m. Then at 9:30 a.m., you can see the movie of your choice – on us! Adult guests are welcome.

Community Circle Member FDIC **Trip and Event Cancellation Policy**

If a cancellation is necessary, every effort will be made to provide either a partial or full refund. However, we cannot guarantee a full refund. There may be times when refunds will not be possible due to ticket purchases, meal number guarantees, etc., but you can count on us to always do our best for you!



Motor Coach Departure
Please arrive at least 15 minutes before the scheduled departure tour.

WALKABILITY CHART:

Our travel activities are rated by “walkability” according to the sneaker chart below – from very easy (one sneaker) to strenuous physical activity (four sneakers).

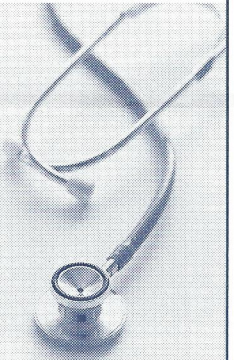
Very Easy – with little incline.	
Moderate – ability to walk at a moderate pace.	
Slightly Strenuous – ability to walk quickly for up to 30 minutes.	
Strenuous Activity – ability to move quickly over uneven terrain for longer periods of time.	

Health Policy

The following is a section from our Travel Policy:

“Community Circle requires that traveling members or non-member guests requiring personal assistance due to health, mental condition, or physical infirmity be accompanied by a companion who is capable of and totally responsible for providing that assistance for the duration of the trip. Neither CNB, the Community Circle Director, nor any bank employee, affiliate, or vendor may assist with medications or physically lift persons onto transportation vehicles.”

If you no longer have a copy of our Travel Policy and would like us to send you one, please let us know. You may also view our policy online at communitynationalbank.com.



YOUR COMMUNITY CIRCLE REPRESENTATIVES

The following representatives are available to help with any questions you might have about Community Circle’s membership and benefits. Please don’t hesitate to give them a call or stop by to visit.

Kristin Hayes
 Barre, 476-6565

Sarah Stevens
 Barton, 525-3524

Sheila Gleason
 Derby Line, 873-3101

Heather Elwood
 Enosburg Falls, 933-8500

Debby Monfette
 Island Pond, 723-4356

Lori Leonard
 Lyndonville
 626-1200

Lorilee Drown
 Montpelier, 223-0598

Billie Jo Wescom
 Morrisville, 888-4633

Robin Coulter
 Newport, 334-7915

Sarah Bedor
 St. Johnsbury
 748-3605

Julie Marquis
 Troy, 744-2287

Linda Cloutier, CBCD
 Community Circle Director
 4811 U.S. Route 5,
 Newport, VT 05855
 334-7915 (office)
 334-6839 (home)

Julie Mossa
 Community Circle Assistant
 334-7915 (office)
 766-2233 (home)

Providing members with a unique blend of social, travel and financial benefits.

Community Circle Member FDIC
PEER GROUP MEMBER

Linda Cloutier, CBCD
 Community Circle Director

Julie Mossa
 Community Circle Assistant